

ORBIT

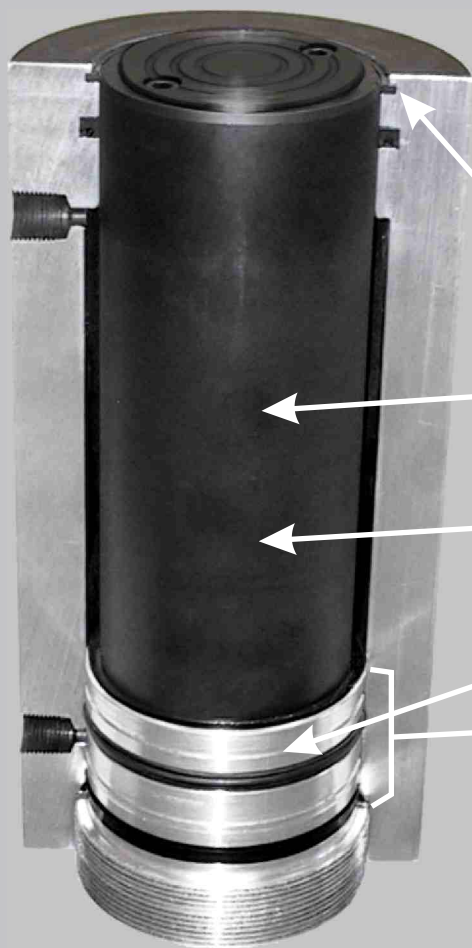
ALUMINUM



CYLINDERS

Double Acting

- Lightweight aluminum alloy construction. Up to 60% lighter than comparable tonnage steel jacks!
- Virtually impervious to lateral load
- 3/8" high-flow quick disconnect couplers
- Constructed and tested in compliance with ANSI B30.1



Wiper seals out dirt and contamination

Hard anodizing for extra protection against corrosion and wear

One piece rod and piston for extra stability and less maintenance

Balancing / Lubricating Grooves

Large bearing surface for protection against side loading

Made in Canada



"ORBIT" - The Lightweight with a **Solid** Punch

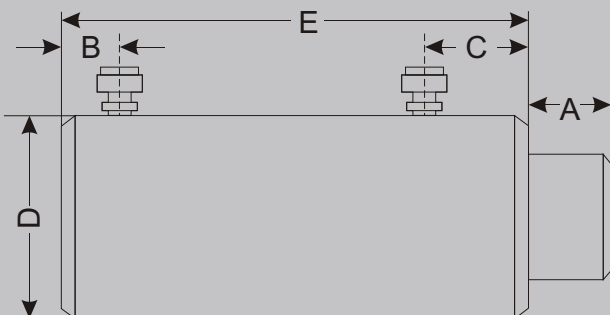
Ordering Information

Operating pressure for all "ORBIT" cylinders up to 700 BAR / 10,000 PSI
Double-Acting - 30 through 150 ton capacities

ORBIT Manufacturing Inc.
#104 - 3070 Norland Ave.,
Burnaby, B.C.
Canada V5B 3A6

Phone: (604)-293-0063
Fax: (604)-293-0064
Email: orbit@telus.net
Web: www.orbithydraulics.com

ORDER MODEL NUMBER	CYLINDER CAPACITY Tons	A STROKE mm / in.	E RE-TRACTED HEIGHT mm / in.	EFFECTIVE AREA		OIL CAPACITY		B BASE TO INLET PORT mm / in.	C COLLAR TO INLET PORT mm / in.	WEIGHT kg / lb.	D CYLINDER BODY Mm / in.
				PUSH cm ² / sq.in.	PULL cm ² / sq.in.	PUSH cm ³ / cu.in.	PULL cm ³ / cu.in.				
ORD 30/8	30	203/8	349/13.8	41.9/6.5	16.3/2.5	850/51.9	295/18	38/1.5	63/2.5	11.8/26	114/4.5
ORD 30/13	30	330/13	476/18.8	41.9/6.5	16.3/2.5	1488/90.9	578/35.3	38/1.5	63/2.5	15.0/33	114/4.5
ORD 50/8	50	203/8	349/13.8	76.4/11.8	17.7/2.8	1447/88.3	360/22	38/1.5	63/2.5	16.0/36	139/5.5
ORD 50/13	50	330/13	476/18.8	76.4/11.8	17.7/2.8	2351/143.5	585/35.8	38/1.5	63/2.5	21.3/47	139/5.5
ORD 75/6	75	152/6	298/11.8	97/15	20.9/3.2	1477/90.2	318/19.4	38/1.5	63/2.5	18.6/41	165/6.5
ORD 75/13	75	330/13	476/18.8	97/15	20.9/3.2	3201/195.4	690/42.1	38/1.5	63/2.5	27.2/60	165/6.5
ORD 100/2	100	50/2	196/7.8	133/20.6	31/4.7	675/41.2	154/9.4	38/1.5	63/2.5	19.0/42	203/8.0
ORD 100/6	100	152/6	311/12.3	133/20.6	31/4.7	2027/123.7	464/28.3	38/1.5	76/3	25.9/57	203/8.0
ORD 100/13	100	330/13	488/19.3	133/20.6	31/4.7	4392/268.1	1005/61.4	38/1.5	76/3	40.8/90	203/8.0
ORD 150/6	150	152/6	336/13.3	198/30.7	44.7/6.9	3016/184.1	681/41.4	38/1.5	100/4	39.5/87	254/10
ORD 150/13	150	330/13	514/20.3	198/30.7	44.7/6.9	6535/378.8	1476/90.1	38/1.5	100/4	55.3/122	254/10



ORBIT Manufacturing Inc. is committed to continuous product enhancement and development and reserves the right to make product design changes without prior notice.

Warranty

All ORBIT cylinders are guaranteed against defects in materials and workmanship. Warranty does not cover normal wear and tear, overloading or improper use. For warranty claims, please contact your nearest ORBIT dealer.