

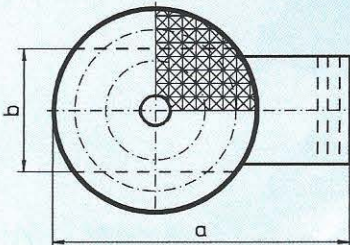
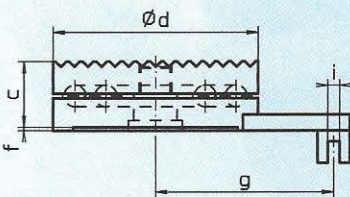
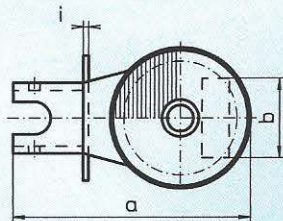
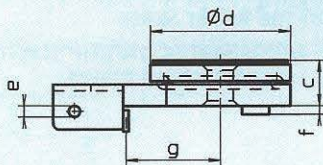
Accessory only for models ... N

For variable transportation

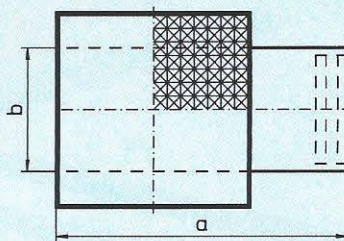
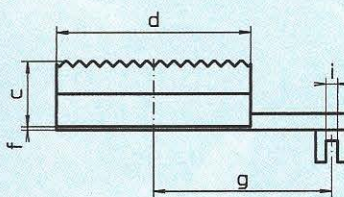
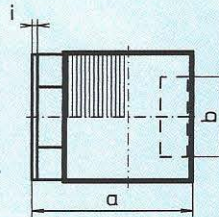
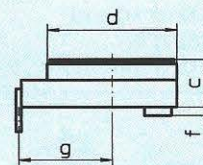
# Roller Skate Express – The Solids



## Swivel/Turntable



## Packing plate / Levelling plate



Mod. I-III

Mod. IV-V

Necessary for turning corners: Turntables are to be placed on top, handle has to be attached; only guide while Roller Skate is moving. Minimum turning circle is 3 m.

Necessary for use with turntable: packing plate for compensating the difference in height between Skates with turntables and the ones without.

### Turntable

Mod.	a	b	c	Ø d	e	f	g	i	Weight kg
I	220	73	42	130	11	8	87	5	4.5
II	220	86	42	130	11	8	87	5	4.5
III	250	96	48	150	11	8	108	5	6.7
IV	275	114	61	190		3	165	11	13.7
V	360	128	61	220		3	235	11	18.9

### Packing plate / Levelling plate

Mod.	a	b	c	d	f	g	i	Weight kg
I	149	73	42	120	8	87	5	3.7
II	149	86	42	120	8	87	5	3.7
III	178	96	48	130	8	108	5	5.3
IV	270	114	61	180	3	165	11	13.8
V	350	128	61	200	3	235	11	18.8

All dimensions in mm